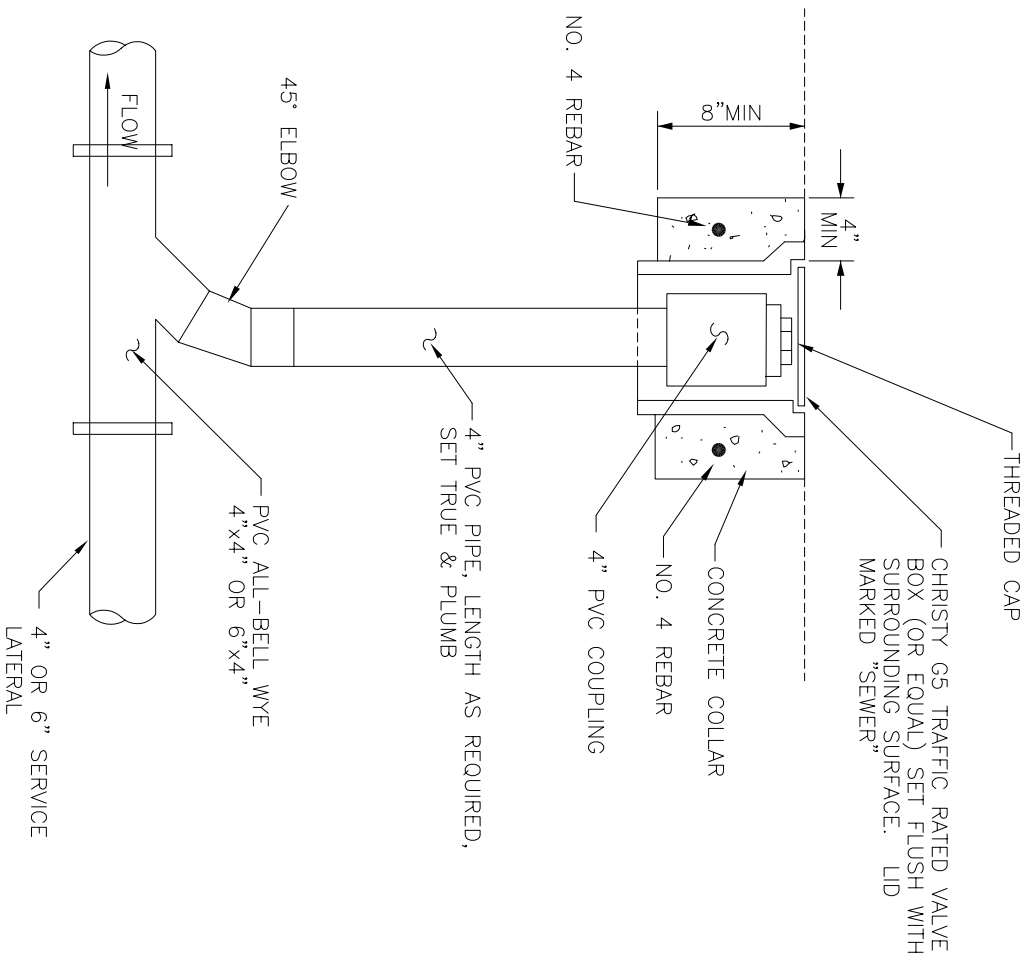


Minden-Gardnerville Sanitation District



NOTE: ALL JOINTS AND CONNECTIONS SHALL BE WATERTIGHT.

1. CLEANOUTS TO BE PLACED AT EVERY ANGLE GREATER THAN 45°, EVERY 150' OF LATERAL, WITHIN 5' OF BUILDING AND IN ACCORDANCE WITH THE CURRENT EDITION OF THE UNIFORM BUILDING CODE.
2. WHERE CLEANOUTS ARE NOT LOCATED IN STREETS, PLACE TOP OF CLEANOUT ABOVE EXISTING GROUND. UNLESS OTHERWISE REQUIRED BY M.G.S.D. INSTALL THE CONCRETE COLLAR FROM A POINT 6" OUTSIDE THE TOP OF THE COVER FRAME AND EXTEND A MINIMUM OF 6 INCHES BELOW THE SURROUNDING GROUND SURFACE. TAPER THE CONCRETE COLLAR FROM TOP TO BOTTOM AT A 1:1 SLOPE OR FLATTER.

SEWER LATERAL CLEAN OUT DETAIL G

July, 2003

RESOURCE CONCEPTS, INC.