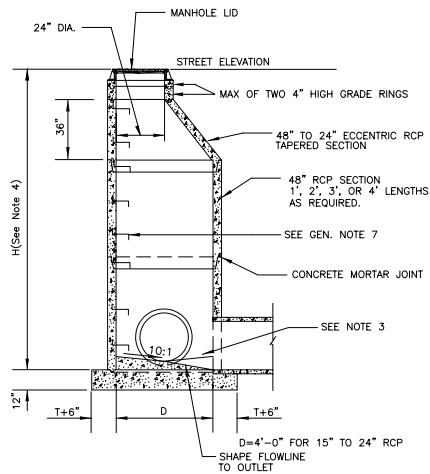
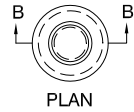


PLAN



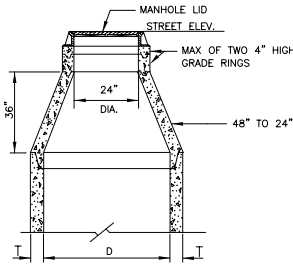
SECTION A-A

**TYPE I MANHOLE  
ECCENTRIC  
FOR 15" TO 24" RCP PIPE**



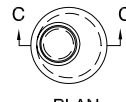
PLAN

NOTE: FOR DIMENSIONS NOT SHOWN  
SEE TYPE 1 MANHOLE ECCENTRIC.



SECTION B-B

**TYPE I MANHOLE  
CONCENTRIC**

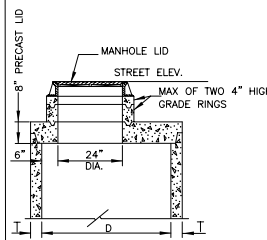


PLAN



PLAN

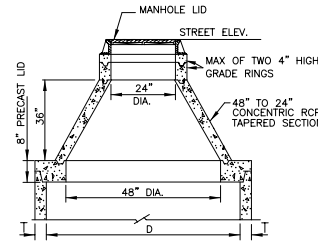
NOTE: FOR DIMENSIONS NOT SHOWN  
SEE TYPE 2 MANHOLE ECCENTRIC.



SECTION C-C

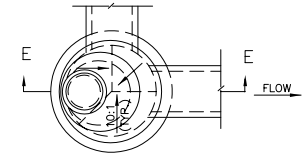
**TYPE I & 2  
MANHOLE  
MODIFIED**

FOR USE IN MINIMUM COVER SITUATION  
WHERE TAPERED SECTION WILL NOT FIT.

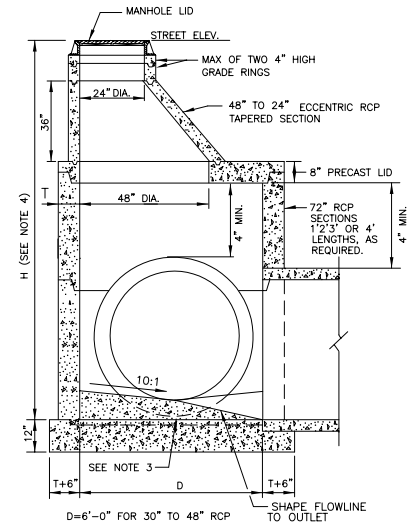


SECTION D-D

**TYPE 2 MANHOLE  
CONCENTRIC**



PLAN



SECTION E-E

**TYPE 2 MANHOLE  
ECCENTRIC  
FOR 30" TO 48" RCP PIPE**

GENERAL NOTES:

1. FOR CAST IN PLACE CONCRETE BASE ALL REINFORCING STEEL TO BE NO. 4 BARS AT 18" CENTERS TIGHTLY WOUND AT ALL INTERSECTIONS AND EMBEDDED IN CONCRETE AT LEAST 2" AND BAR ENDS MUST CLEAR CONCRETE SURFACES BY 1 1/2".
2. ALL CONCRETE SHALL CONFORM TO THE REQUIREMENTS OF SECTION 202 OF THE STANDARD SPECIFICATIONS FOR PUBLIC WORKS CONSTRUCTION FOR CONCRETE EXPOSED TO FREEZE-THAW ENVIRONMENT.
3. MANHOLE WITH MORE THAN ONE PIPE-INFLOW PIPE INVERT ELEVATIONS SHALL BE ≥ 0.1' ABOVE OUTFLOW PIPE ELEVATION.
4. FOR VALUES OF "H" SEE PLANS. "H" IS THE DIFFERENCE IN ELEVATION BETWEEN THE OUTFLOW PIPE INVERT ELEVATION AND THE TOP OF MANHOLE ELEVATION AT STREET GRADE.
5. DO NOT PLACE PIPES IN TAPERED SECTION.
6. MANHOLE COVER SHALL BEAR ENTITY IDENTIFICATION AND SYSTEM FUNCTION (IF APPLICABLE).
7. MANHOLE STEPS SHALL CONFORM TO ASTM STANDARD SPECIFICATION C-478 WITH MAXIMUM SPACING OF 16" AND 4" CLEAR DISTANCE FROM THE WALL OF RISER OR CONE SECTION. THE STEP MUST HAVE A 10" MINIMUM WIDTH.
8. SHAPE FLOWLINE IN MANHOLE TO OUTLET PIPE, AND PROVIDE A 10:1 MINIMUM SLOPE FROM ALL DIRECTIONS TOWARD FLOWLINE.
9. COMMERCIAL PREFABRICATED ADJUSTMENT RINGS FOR MANHOLES MAY BE USED WHEN APPROVED BY THE ENGINEER.
10. T = THICKNESS PIPE WALL

**TYPE 1 & 2 AND TYPE 1 & 2 MODIFIED MANHOLES  
DETAIL I**

**Minden-Gardnerville Sanitation District**